

CDM REGULATIONS
POSSIBLE HAZARDS IN AND ADJACENT TO THIS PROJECT SITE MAY INCLUDE SOME OR ALL THE FOLLOWING -

HAZARD	TICK
ELECTRICAL	✓
ASBESTOS	✓
LOW BEAMS	
FALLING OBJECTS	
HEIGHT WORKING-FALLING OFF SCAFFOLD	✓
LOOSE FLOOR COVERING	
UNSECURED LADDERS	
EXPLOSIVE/POISONOUS GASES	
NOISE	
ROAD/SITE TRAFFIC	
EXCESSIVE HEAT	
WELDING ACTIVITY	
FRAGILE ROOFING MATERIAL	
DEEP WATER	
EXCAVATIONS	
PIPED SERVICES/GASES	
PIPED SERVICES/COMPRESSED AIR	
PIPED SERVICES/LIQUIDS	✓
UNEVEN/SOFT GROUND	
SERVICE TRENCHES IN GROUND	
PROJECTIONS	
ADJACENT PERSONS	
CONFINED SPACES	✓

APPROPRIATE ITEMS OF PERSONAL PROTECTIVE EQUIPMENT ARE TO BE WORN AS REQUIRED BY STATUTORY REGULATIONS. WORK PERMITS ARE TO BE OBTAINED WHERE APPROPRIATE. SAFE WORKING PRACTICES ARE TO BE EMPLOYED AT ALL TIMES.

IEE REGULATIONS NOTE - COMPLIANCE WITH THE SAFETY RULES AND GUIDANCE IN THE LATEST EDITION OF THE IEE WIRING REGULATIONS SHALL BE ASSURED THROUGHOUT THE INSTALLATION.

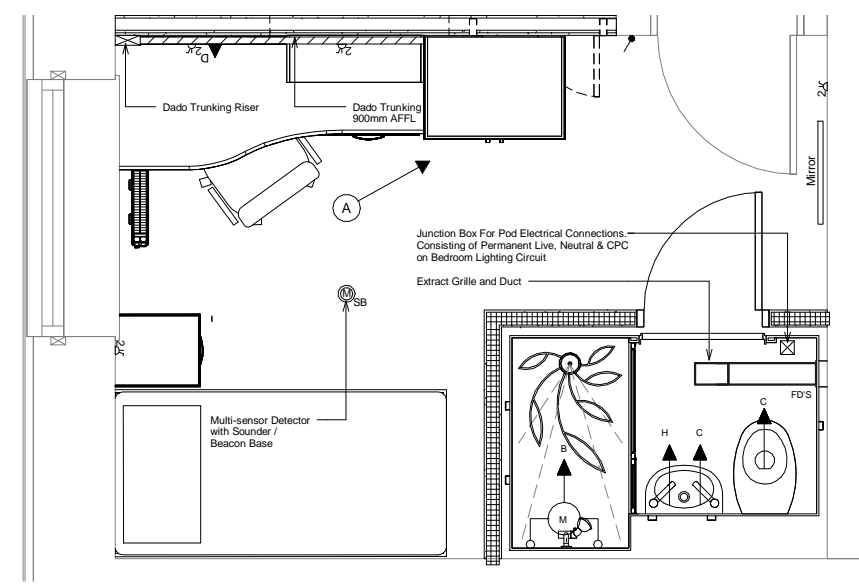
- NOTES**
- Do Not Scale From This Drawing
 - This Drawing is Conceptual Only and Needs To Be Read In Conjunction With The Accompanying Stage 3 Report

Electrical Legend

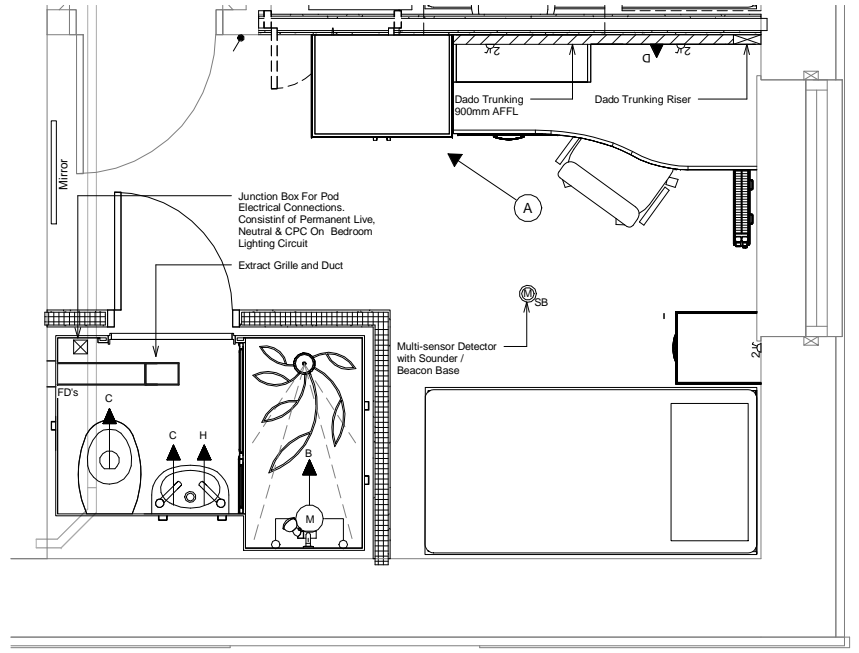
- Decorative Brass LED Bulkhead Luminaire
- Decorative Brass LED Bulkhead Luminaire C/W Integral Emergency Conversion Module
- Decorative Brass LED Bulkhead Luminaire C/W Integral PIR Occupancy Sensor
- Decorative Brass LED Bulkhead Luminaire C/W Integral PIR Occupancy Sensor & Emergency Conversion Module
- Maintained Illuminated Emergency Exit Sign
- Switch
- Smoke Detector C/W Sounder / Beacon Base
- Multi-sensor Detector C/W Sounder / Beacon Base
- Fire Alarm Manual Call Point
- Switched Double Socket
- Double Data Outlet
- Dado Trunking
- Dado Trunking Riser

Mechanical Legend

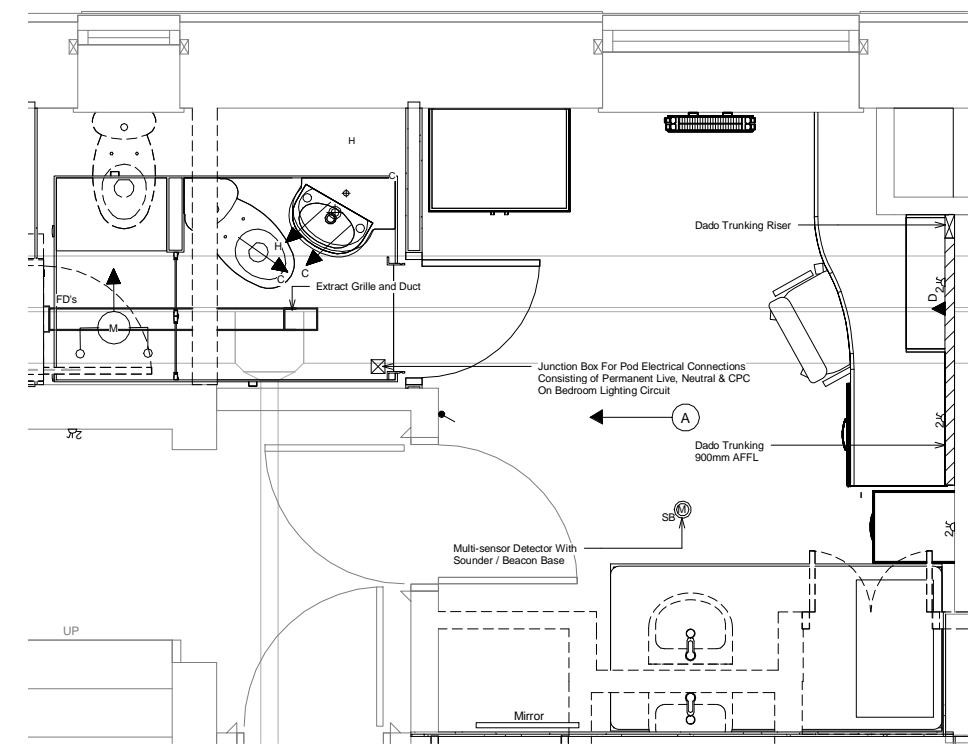
- Boosted Shower Mixer
- Hot Water Outlet
- Cold Water Outlet
- Fire Damper
- Extract Grille



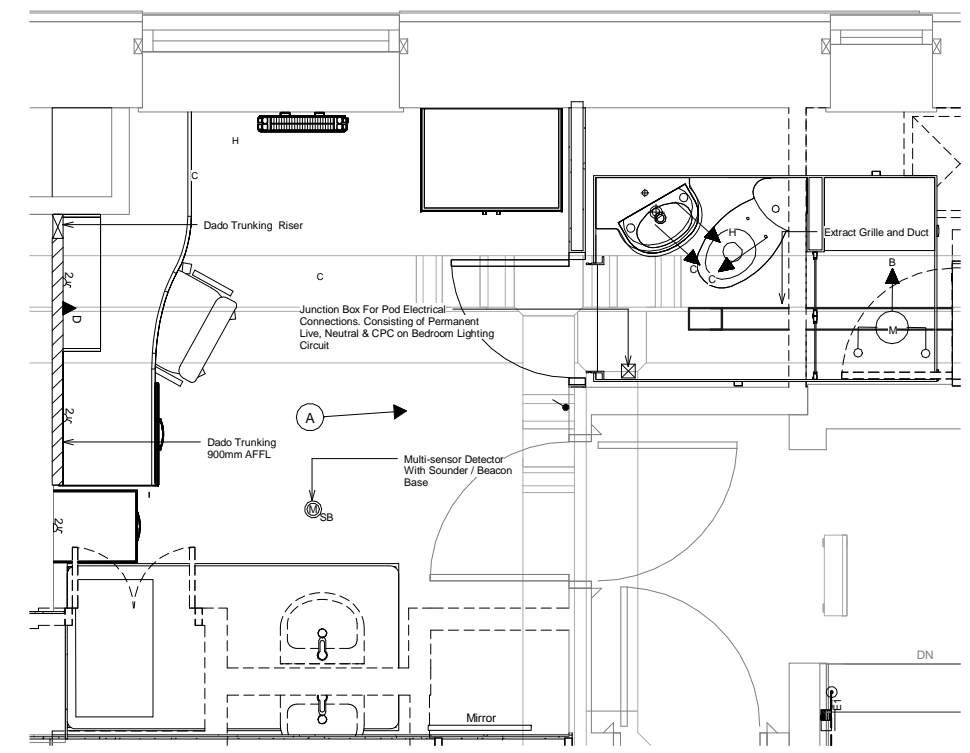
First & Second Floor - Bedroom Type 1



First & Second Floor - Bedroom Type 1A



First & Second Floor - Bedroom Type 2



First & Second Floor - Bedroom Type 2A

P1	L.PHILLIPS	27.02.15	L.BOOOTH	27.02.15
STAGE 3 REPORT				
REV	REVISED BY	DATE	CHECKED BY	DATE

Armstrong Rhead LIMITED
CONSULTING ENGINEERS - BUILDING SERVICES

12 Wilroy Way
Baldon Business Park
Baldon
Tyne & Wear
NE35 5PE

Tel: 0191 496 2405
Email: ar@armstrongrhead.co.uk
Website: www.armstrongrhead.com

Durham University

PROJECT
REFURBISHMENT OF EXISTING PACE BUILDING ACCOMMODATION BLOCK

TITLE
MECHANICAL & ELECTRICAL ENGINEERING SERVICES - FIRST & SECOND FLOOR - BEDROOM TYPES 1, 1A, 2 & 2A

Drawn	Author	Checked	Checker
Scale	As indicated	Date	February 2015
Dwg. No.	1567 / SKME01	REV	P1
Dwg. Status	STAGE 3		