

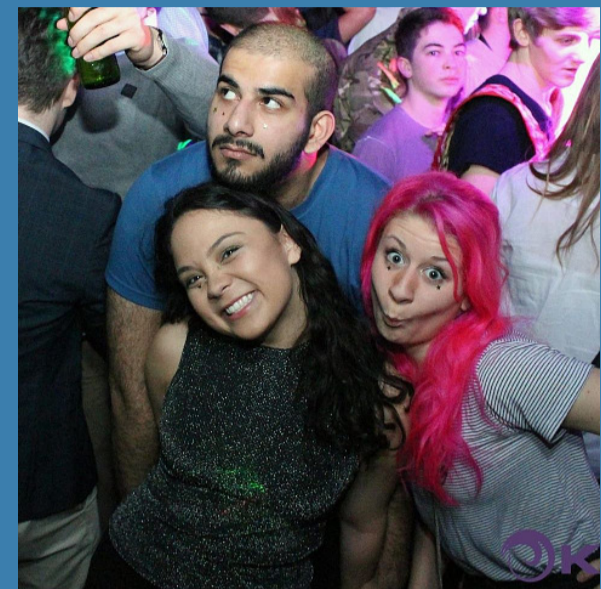
Meghan Hosch

Year 1

Communities Officer

Before Hatfield

- PRESIDENT OF MODEL UNITED NATIONS SOCIETY
- PRESIDENT OF FRENCH SOCIETY
- VICE-PRESIDENT OF DEBATE SOCIETY
- SECRETARY OF INTERNATIONAL STUDENT ASSOCIATION
- SECRETARY OF NATIONAL HONOUR SOCIETY



As an experienced leader I've proven that I can fairly represent varying opinions to a larger body, increase enthusiasm and participation within a society and the greater community, as well as devote the time and energy necessary for one in charge of inclusiveness, representation, and action.



- JUNIOR COMMUNITIES REP
- HATFIELD ELECTIONS COORDINATOR (SU)
- JUNIOR ENTS REP

At Hatfield

As an active member of Hatfield's JCR I have participated in focus groups regarding accommodation fees, mental health, and sexual consent, protested for lower accommodation fees, and organised and assisted in marketing campaigns for the Michaelmas Ball, Hatfield Sessions, and Rugby/Football Floodlit Cups. In the near future I will be overseeing SU voting stations and promoting SU elections at Hatfield.

What I Will Do

- REQUIRE GOOD LAD WORKSHOP TRAINING FROM ALL EXEC MEMBERS AND SPORTS CAPTAINS
- WORK MORE WITH SCA TO INTEGRATE HATFIELD INTO THE LOCAL COMMUNITY
- WORK WITH SABBATICAL ALUMNI OFFICER REGARDING THE LISB AND TO SOURCE MORE JCR FUNDING
- CREATE A JUNIOR TEAM THAT REFLECTS NEEDS OF INTERNATIONALS, ERASMUS, MCR, AND LGBTQ+
- INCORPORATE EVENTS WITH WELFARE, ENTS, AND LO
- INCREASE RESPONSIBILITIES AND VISIBILITY FOR TEAM DURHAM REPS, LGBTQ+ REPS, AND INTERNATIONAL REPS
- INCREASE COMMUNICATION TO MEMBERS REGARDING EVENTS/SOCIETIES/CLUBS THROUGH MULTIPLE PLATFORMS
- PROVIDE COMMUNICATION OF SU ISSUES AND ACCESSIBILITY FOR JCR MEMBERS TO VOICE CONCERNS ABOUT UPCOMING SU ISSUES



PROPOSER: THOM MUNNS

SECONDER: GENEVIEVE BURNS